

# Yazaki CH -K40

## Specifications

Marka	Yazaki
Typ	CH -K40
Typ produktu	Absorption Chiller
Ogólna wydajność w kW	141,0
Ogólna wydajność w	40,1
Tonaż	
Czynnik chłodzący	Other
Liquid buffer tank	✓
Waga kg.	Dry weight: 1918 kg Operating weight: 2204 kg
Rozmiary	1430x1700x2100 mm (LxWxH)
Uwagi	Y.o.b. 2007
Stock	1



## Description

### Used Yazaki CH -K40

This used Yazaki CH-K40 absorption chiller is designed for commercial HVAC applications where both chilled and hot water are required for air conditioning systems. It provides a reliable solution for buildings that need efficient year-round climate control using a thermally driven process rather than conventional mechanical compression.

The system operates with lithium bromide as the absorbent and water as the refrigerant under low-pressure conditions. This absorption technology allows the unit to produce cooling or heating depending on demand, and thanks to an integrated changeover valve, it can switch between these modes within the same system. This makes it a flexible and practical choice

for HVAC installations that require both functions from a single machine.

The CH-K40 is built around a robust set of core components, including a high-temperature generator, a low-temperature generator, a water-cooled condenser, an evaporator, and an absorber. Together, these elements form a closed absorption cycle that ensures stable and efficient operation in commercial environments where reliability and continuous performance are essential.

Cooling capacity: 141 kW (Outlet temperature: 7°C)

Heating capacity: 115 kW (Outlet temperature: 55°C)

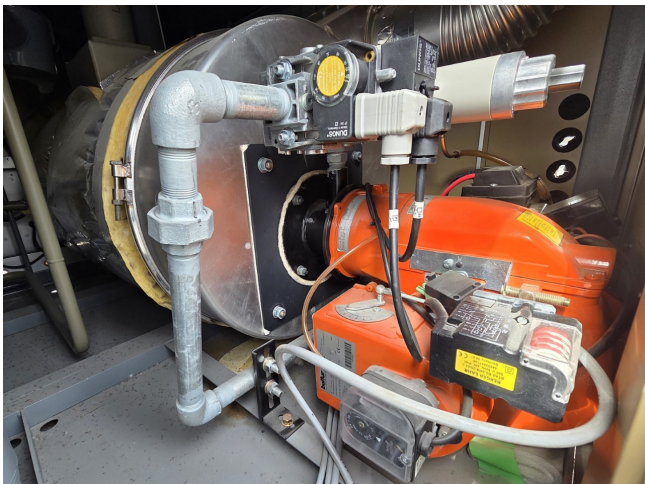
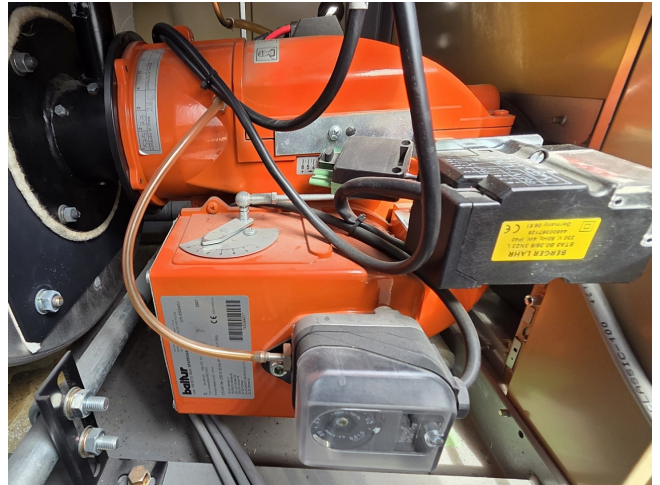
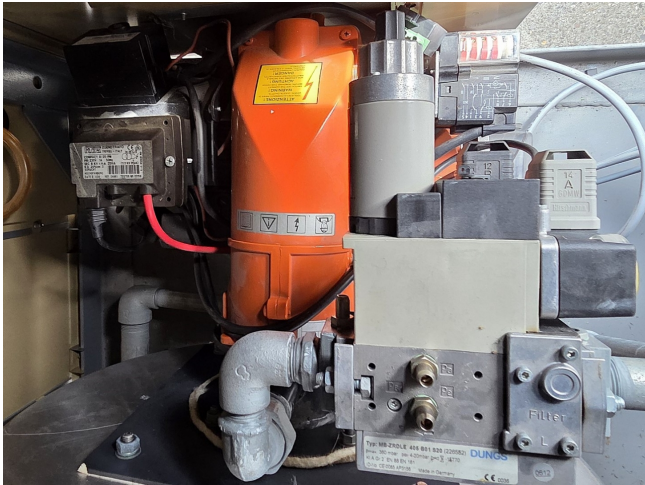
\*All components of this used chiller will be tested on adequate performance, leak free condition (condensing blocks), compressors, fans, control panel, and so forth). Choosing HOSBV means buying with warranty. We perform a industrial cleaning. if requested we can arrange your shipment.



AROACE Double Effect Absorption Chiller-Heater			
Technical Specifications			
Model		CH-K 4 0	
Type			
Capacity	Cooling	(kW)	141
	Heating	(kW)	115
Type		Natural Gas	
Fuel	Consumption	Cooling (MJ/h)	496
		Heating (MJ/h)	496
	Pressure	(kPa)	1.96
Chilled	Outlet	Cooling (°C)	7.0
	Temperature	Heating (°C)	55.0
Hot Water	Flow Rate	(l/s)	6.1
	Evaporator Pressure Loss	(kPa)	63.7
Cooling Water		Inlet Temperature (°C)	
	Flow Rate	(l/s)	10.2
	Condenser/Absorber Pressure Loss	(kPa)	68.6
Electrical	Supply	(V AC/ph/Hz)	400/3/50
	Consumption	Cooling (w)	1410
		Heating (w)	1410
IP		IPX4	
Serial No		740E5006	
Manufacturing Date		3/2007	
Manufacturer: Yazaki Corporation Hamamatsu, Japan			
Distributor: YAZAKI EUROPE LIMITED			







SOLUTION PUMP MOTOR	
MODEL	CH-K 40 U
PHASES	3
VOLTS	400
HERTZ	50
INS. CLASS	F
RATING	CONT.
OUT PUT	0.50 kW
FLA	2.5 A
RPM	2860
SERIAL No.	740E5006
YAZAKI RESOURCES CO.,LTD. HAMAMATSU, JAPAN.	

